





**Pocket pre-orders
are opening August
3rd, 2020 8am PST.**

**Pocket is shipping
May 2021***

***due to the unfortunate global state of affairs
and supply chain challenges outside of our
control***



Analogue Pocket™ news.

Pocket and Dock each have a small design change.

Pocket: start, select and home button have been moved to the low-center for optimal comfort.





Dock: the USB-C insertion point has been recessed for added stability.

Pocket can sleep & wake at anytime during use. Press the **power button** and Pocket will suspend gameplay and enter a low power sleep mode. Press the power button again to wake and pick up right where you left off.



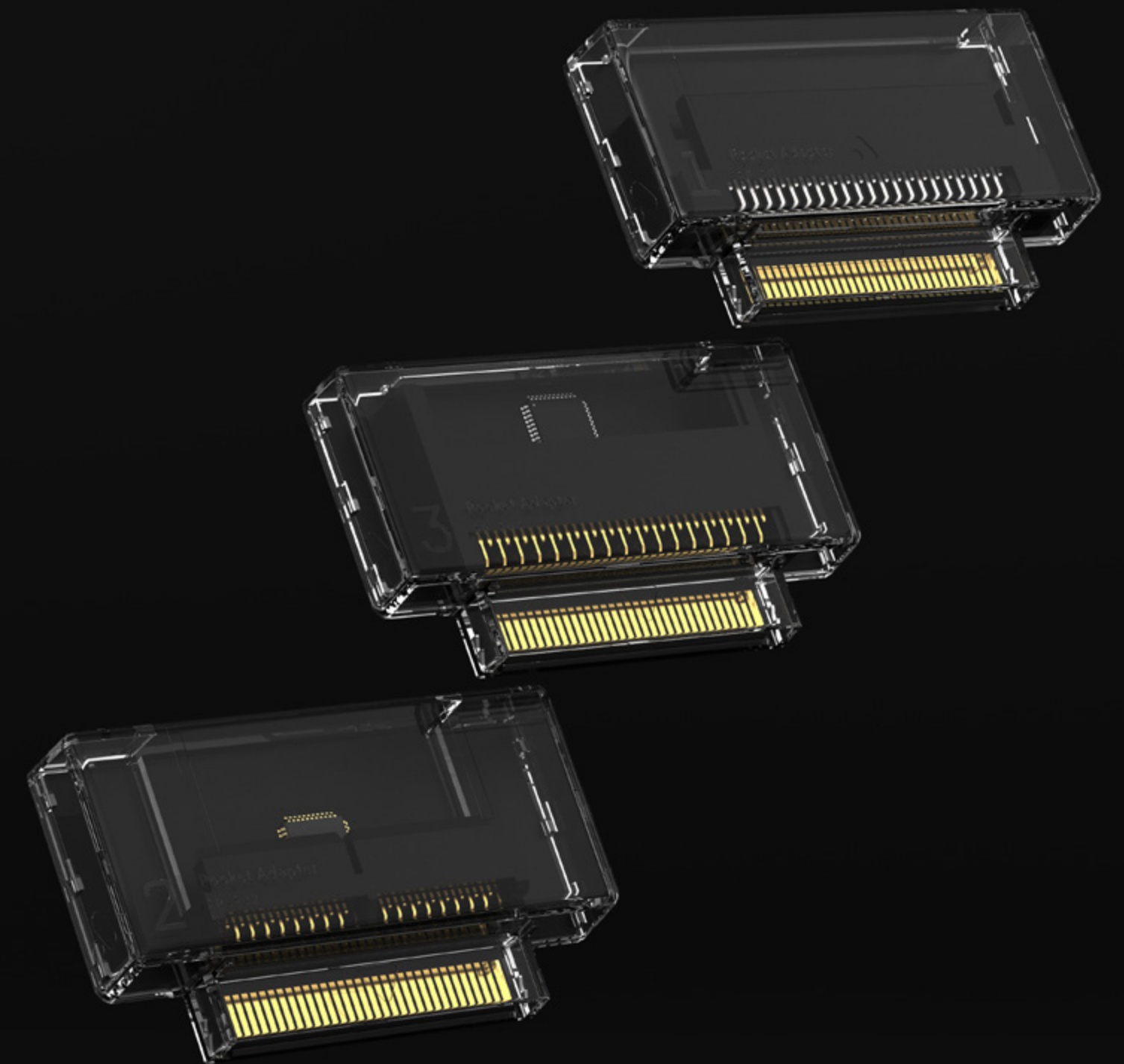
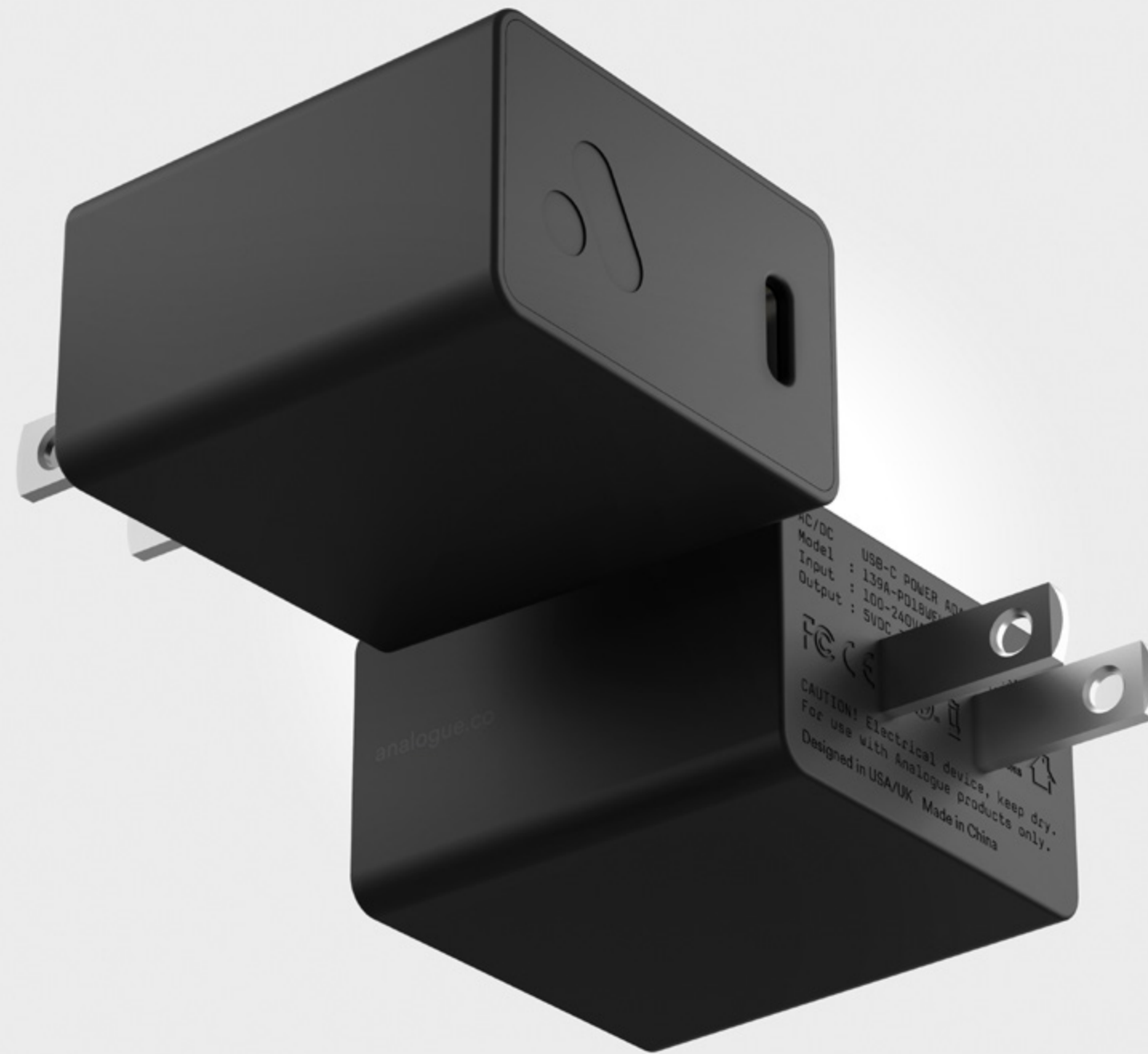
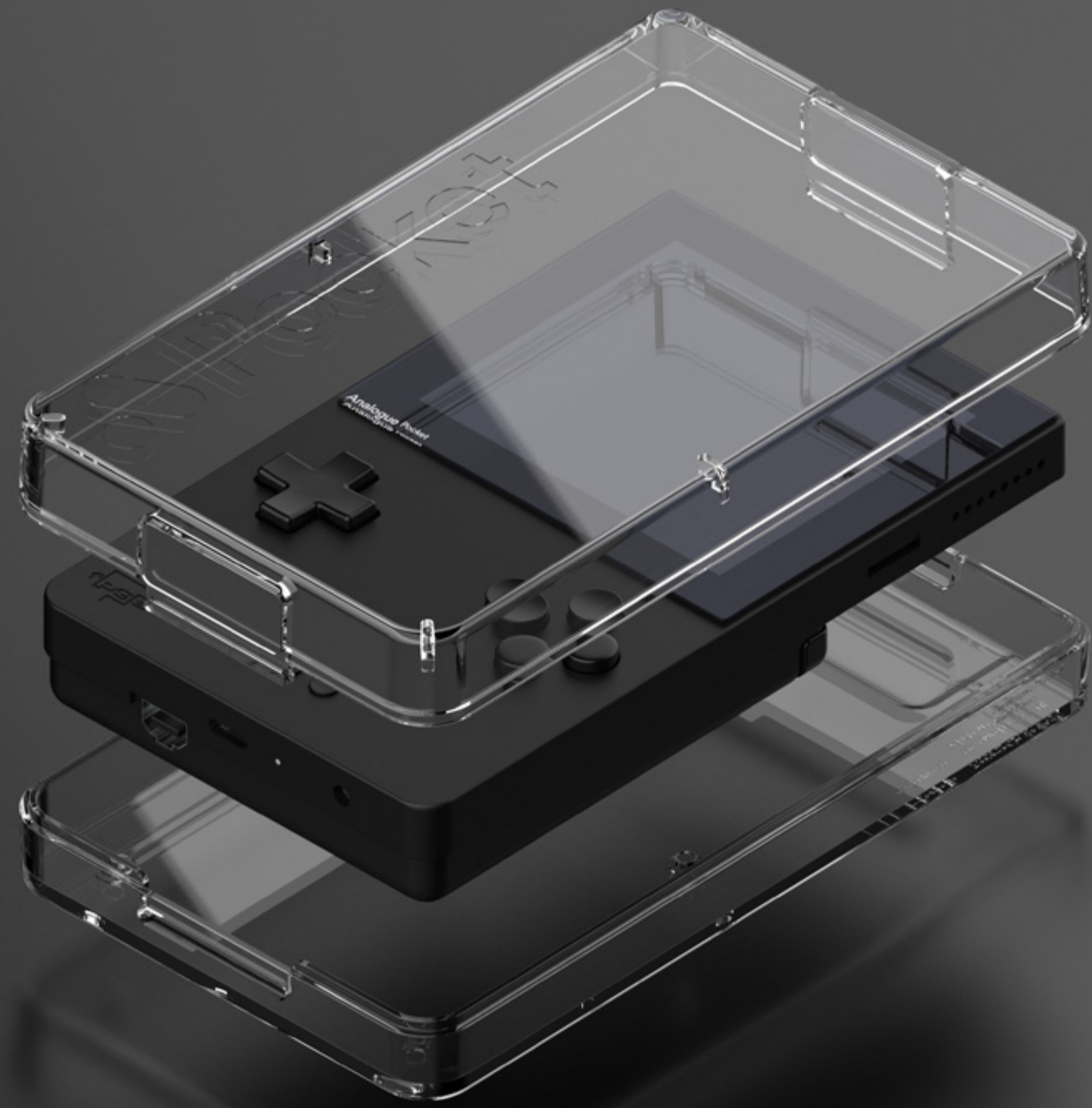
Analogue Dock supports up to 4 controllers. You can connect controllers via Bluetooth, 2.4g and wired USB. Yes, Dock features 2.4g in addition to Bluetooth.





Pocket supports Pocket to Pocket Multiplayer. Up to 4 players. Requires cables sold separately.

We designed accessories for Pocket: a beautiful transparent Hardcase, a tempered glass screen protector, a fast charging power supply, and cartridge adapters for Game Gear, Neo Geo Pocket Color and Atari Lynx.



Nanoloop: we also designed high quality MIDI and Analog sync cables so you can connect Pocket to your Mac, PC and other music hardware when using Nanoloop.



Pocket has a new feature called Original Display Modes. Transform Pocket's display into the display of an original GB, GBC, or GBA. Quirks and all.



Pocket's display is made from Gorilla Glass and 3x the typical thickness (1.5mm) in smartphones. It's tough.





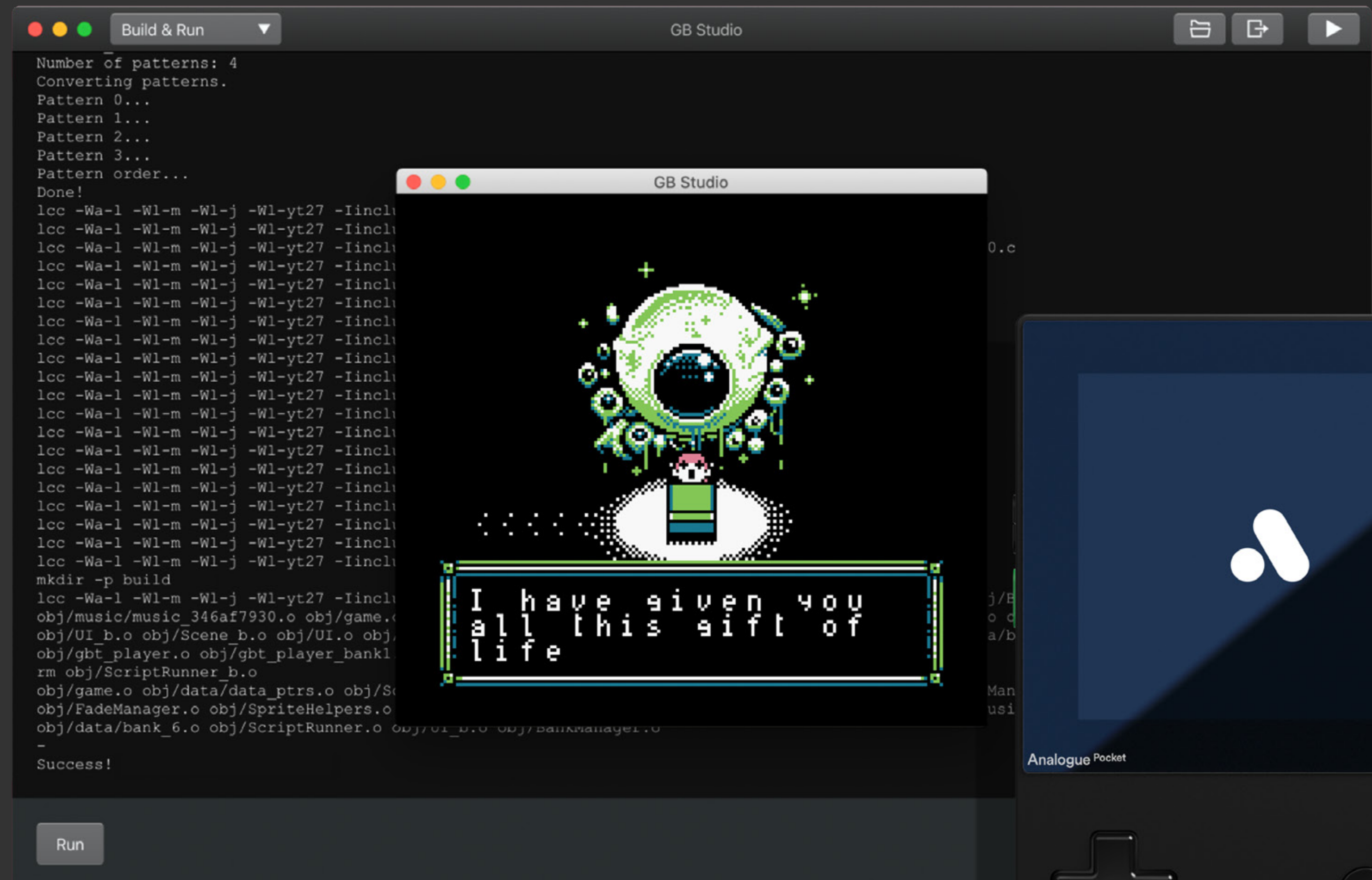
Pocket's display is ultra-capable for a handheld. It has variable refresh and features user controllable 360° display rotation (for things like tate mode).

Pocket has a 4300 mAh battery with 6-10 hour play time / 10+ hour sleep time.

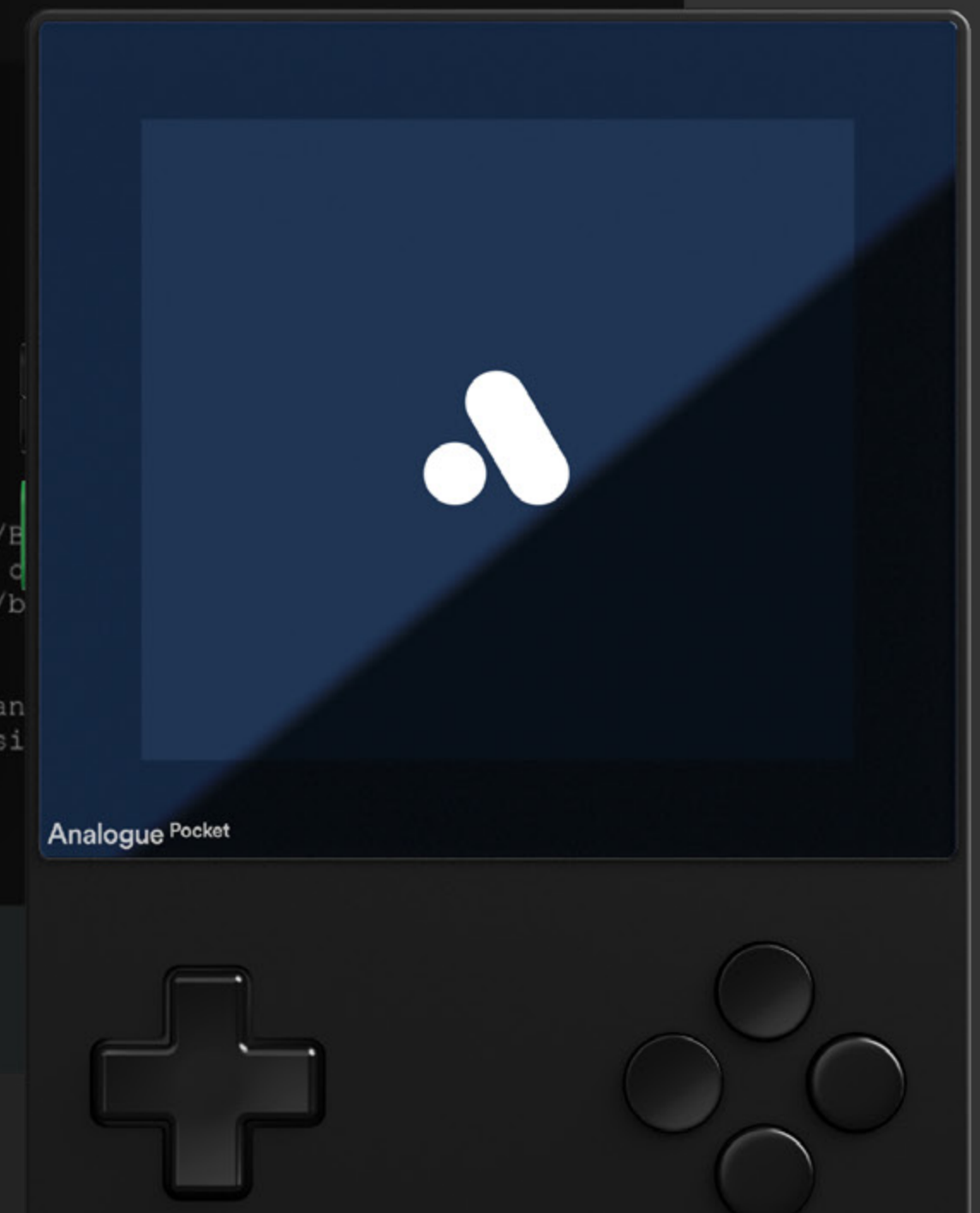


We partnered with GB Studio so users can bring their game ideas to reality with zero programming knowledge needed.

GB Studio is a quick and easy to use drag and drop retro game creator for your favorite handheld video game system. It allows you to generate proprietary .pocket files with GB Studio and run them off your SD card.



<https://www.gbstudio.dev/>



**We're launching an FPGA
developer program on our site:**

<https://developer-preview.analogue.link>





Analogue Pocket
\$199.99

Analogue Dock
\$99

Pre-order 3rd August

